

Dynamic 2100

Battery powered plastic strapping tool



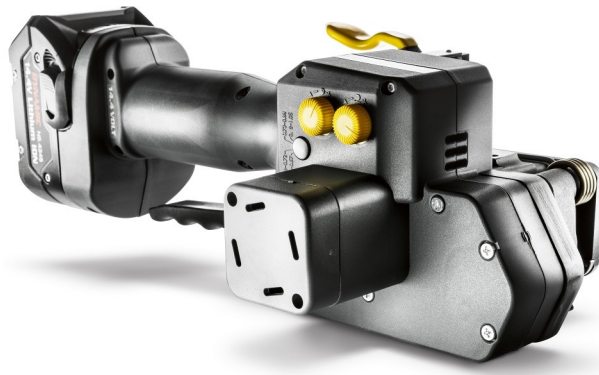
**Versatile and user-friendly strapping tool
for most applications in all industrial sectors.**

Dynamic 2100

Characteristics

Dynamic 2100

| | |
|------------------------|---|
| Strapping qualities: | PET (Polyester) and PP (Polypropylene) plain or embossed |
| Strapping dimensions: | widths 12.7 - 19.0 mm / 1/2 - 3/4" thicknesses 0.40 - 1.27 mm / .016 - .050" |
| Weight: | 4.3 kg / 9.5 lbs |
| Average seal strength: | approx. 75 % |
| Sealing method: | Friction weld |
| Tensioning force: | 650 - 3000 N / 146 - 675 lbs adjustable |
| Tensioning speed: | 160 - 230 mm/s / 6.3 - 9 inch/sec. |
| Power supply: | Li-Ion battery 14.4 VDC / 3 Ah |



Advantages:

- Light and versatile strapping tool
- Robust and durable design
- Well proven strapping technology
- Simple one-handed operation
- Excellent cost - performance ratio
- Latest Li-Ion battery technology

